

TO ACCESS CUSTOMER CONNECT

1) Login to your Midwest Energy account at mwenergy.com


Account Login

Login to access your account or pay your bill.

LOGIN

Account Number: 020200895

Current Balance:	\$240.00
Due Date:	Sep 10, 2021
Bill Amount:	\$240.00
Paperless Billing:	On

 [Your CustomerConnect energy usage info.](#)

[View/Pay](#)

2) Click the house icon located to the right of your account information.

If you do not have a Midwest Energy account, you can sign up for one

Sign In ?

Sign-In Seal: [Click here to create a seal](#)

Username:

Password:

Remember me next time

[Forgot your Username/Password?](#)

[Deactivate your profile?](#)

Don't have an account? [Sign up now](#)

**You will need your account number and billing zip code*



MIDWEST ENERGY, INC.
1330 CANTERBURY DRIVE
HAYS, KS 67601



MIDWEST ENERGY, INC.

CUSTOMER CONNECT

YOUR ENERGY INFORMATION,
READY WHEN YOU WANT IT.

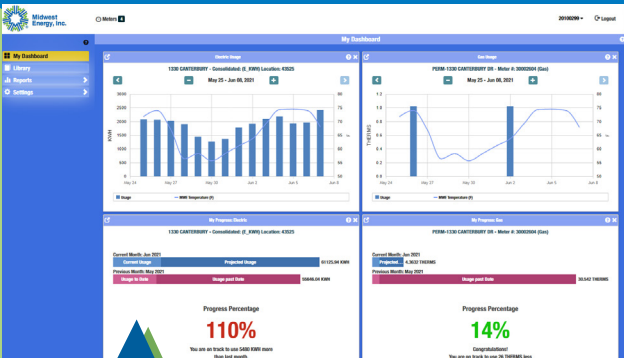
PRST STD
U.S. POSTAGE
PAID
PERMIT NO. 122
SALINA, KS 67401

INTRODUCING CUSTOMER CONNECT

Between 2016 and 2019, Midwest Energy installed new, automated meters at no cost for all electric and gas customers.

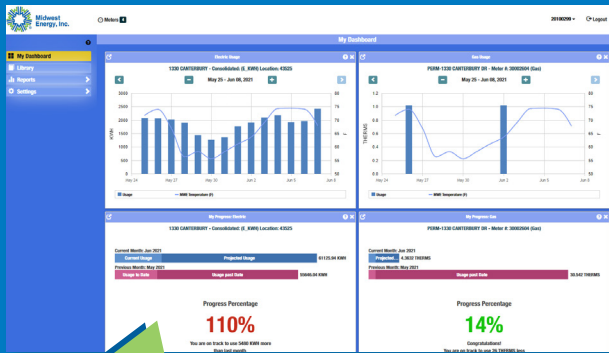


Using the data from these meters, the user-friendly CustomerConnect portal allows you to access your monthly, weekly or even hourly energy use data at any time, rather than waiting until a bill arrives.



You can now see electric and gas use for the past day, week or month.

FEATURES

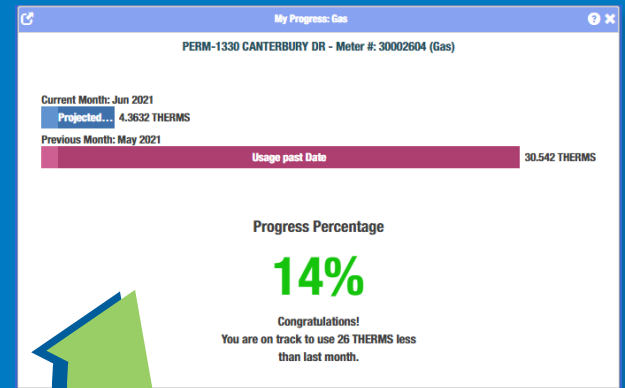
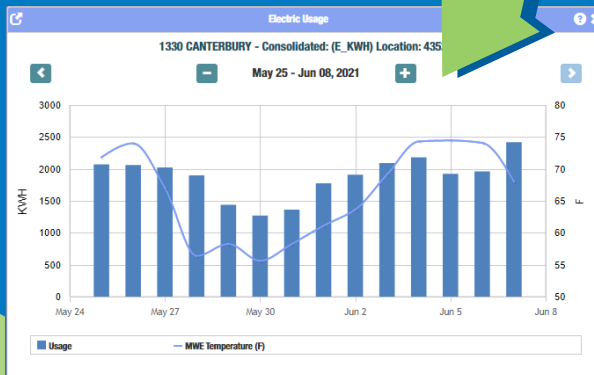


USER-FRIENDLY DASHBOARD

Configure your dashboard to see the information you want, first, even if you have multiple meters.

VIEW USAGE

Adjust dates to view monthly, weekly or daily usage, down to the hour.



MONTHLY PROGRESS

CustomerConnect automatically compares your current month's usage to the previous month, helping you to make informed energy decisions.



You can set up e-mail alerts, notifying you when your usage reaches a chosen level, enabling you to budget more effectively and use energy more efficiently.

AND MORE!